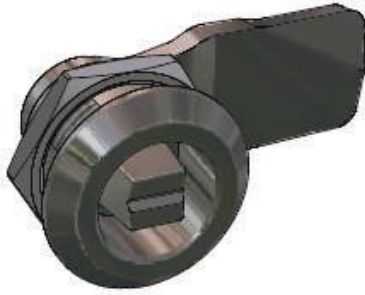
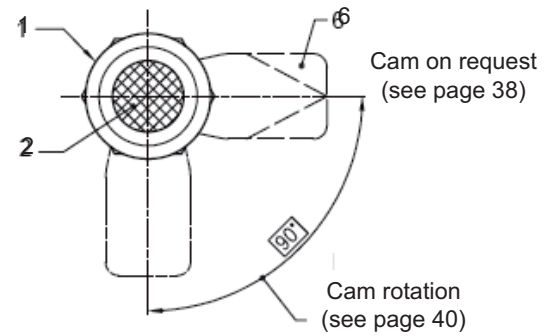
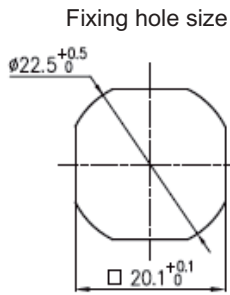
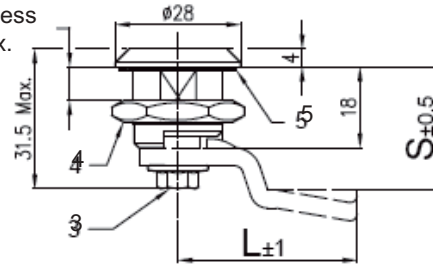




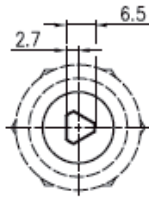
5*918 - Drehriegel, Zinkdruckguss, Plastik, Edelstahl



Panel thickness
8 mm max.

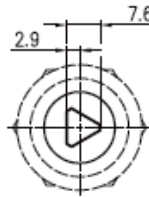


Triangle 6,5 mm



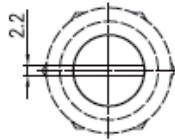
Code: A

Triangle 8 mm



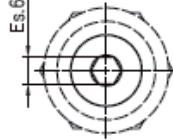
Code: B

Slotted recess



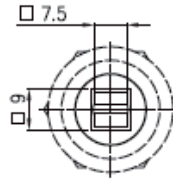
Code: D

Inside hex. 6 mm



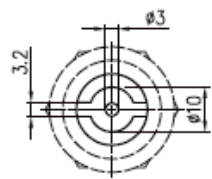
Code: G

Railways square



Code: M

P3 pin



Code: P

Insert * head style "code" and $\phi\phi$ material "code" into lock part number

Lock Part Number
5*918 $\phi\phi$ NRA5TW

Material Code	Housing	Cylinder
BC	Epoxy black	Bright chrome
CP	Bright chrome	Bright chrome
BK	Epoxy black	Epoxy black

Ref	Part description	ZINC ALLOY (see table) Material - Finishing	INOX (SS) Material - Finishing	PLASTIC (PN) Material - Finishing
1	Housing	Zinc alloy - See table	AISI303 - polished	PA6.6 + 20%GF black
2	Cylinder	Zinc alloy - See table	AISI304 - polished	PA6.6 + 20%GF black
3	Screw M6X10	Steel - white zinc Cr6 free	AISI303	Steel - white zinc Cr6 free
4	Nut M22X1,5	Steel - white zinc Cr6 free	AISI303	PA6.6 + 30%GF black
5	Gasket	NBR	NBR	NBR
6	Cam	Steel - white zinc Cr6 free	AISI3034- polished	Steel - white zinc Cr6 free